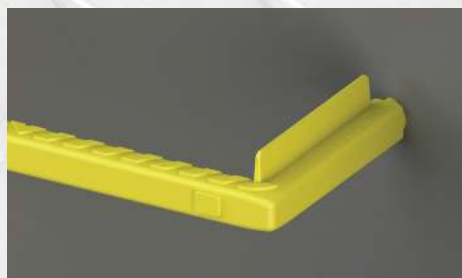


A STEP IN THE RIGHT DIRECTION

POSISTEP

Plastic encapsulated step irons direct from the Australian manufacturer.



For use in access chambers for sewers, drainage pits and water tanks.

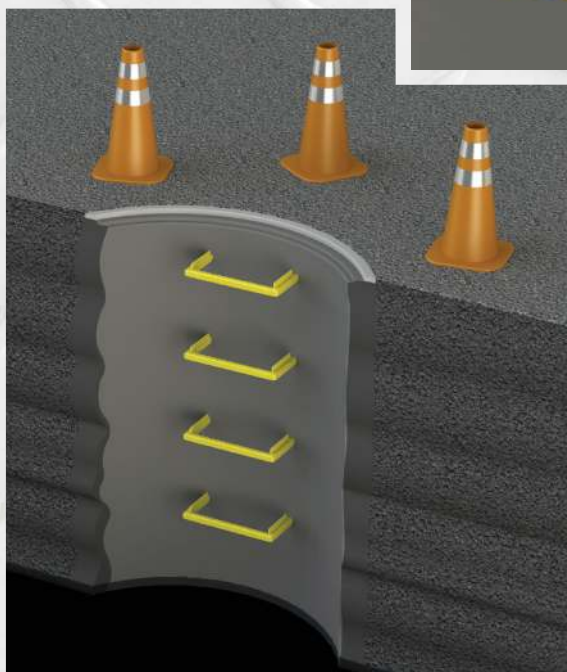
PosiStep step irons are made from high strength steel bar which is fully encapsulated in tough UV stabilised polypropylene co-polymer. The bright yellow colouring allows excellent visibility

in low light environments.

PosiStep have no sharp edges and feature a 25mm high vertical foot stop to help prevent the foot from accidentally slipping off the step side.

The polypropylene used to overmould the PosiStep is resistant to attack from a wide range of chemicals including acids, alkalis and chemicals typically found in sewer and water systems. PosiStep has sufficient strength to exceed all relevant standards and will take the harshest of punishments.

PosiStep can be set into pre-cast structures during the concrete pour, fixed into a drilled hole with an epoxy resin or quick setting cement, or fitted into PosiStep inserts.



Long product life

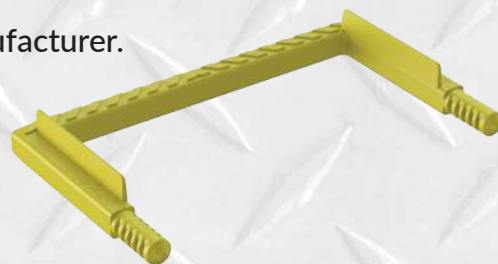
The polypropylene encapsulation over the steel bar ensures continued corrosion resistance resulting in a long product life.

Save

Deal direct with the manufacturer.

Sizes

375mm
225mm
175mm



Ferrule Insert

The PosiStep ferrule inserts do not require epoxy resin when setting into a wall during the concrete pour.



All PosiStep components are manufactured under a quality system conforming to ISO 9001:2015.

PosiStep is tested and approved to AS 1667.



PosiStep installation using epoxy resin.

1. Mark two level points at the width of your PosiStep.
2. Drill two holes $\text{\O}25\text{mm}$ x 75-85mm deep.
3. Remove concrete dust from the holes.
4. Use a caulking gun to apply epoxy resin into each hole.
5. Secure the PosiStep into the wall by knocking it in with a hammer.

